



INSTALLATION AND QUICK START GUIDE

Revision 1.0

COPYLEFT © 2009 BY A. HARDIENA

Website: www.ahardiena.web.id

Email: ahardiena@gmail.com

POWERED BY



AWALI

**ASOSIASI WARNET LINUX & OPEN SOURCE INDONESIA
INDONESIAN LINUX & OPEN SOURCE INTERNET CAFE ASSOCIATION**

INTRODUCTION

It's good to use proprietary as Internet Cafe software, but how efficient it can do? How much cost you must pay to make your internet cafe software running completely. The operating system, office applications, anti virus and more. You need more than one bundle software, you need that for whole PC in your internet cafe, it's very costly.

More than that, you still must working hard to maintain your software from viruses, spyware, and other intrusion, in other way, it's costly and painly.

Zencafe, Linux distribution that developed to fulfill this need. Included secure, stable, more resist for viruses and other intrusion GNU/Linux Operating System with whole software for Internet Cafe need, Zencafe bring your Internet Cafe one step beyond.

MINIMAL REQUIREMENT

- Pentium III class processor
- 128 Mb RAM
- 3 Gb Harddisk

SOFTWARE INCLUDED

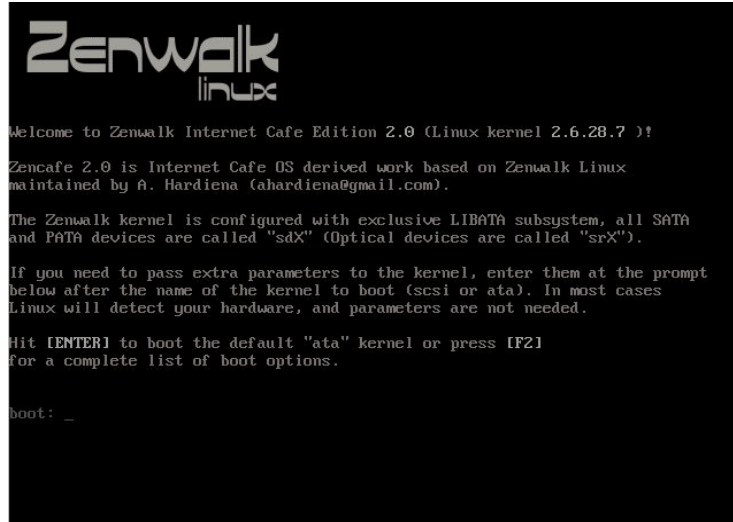
- GNU/Linux Operating System, kernel 2.6.28.7
- OpenOffice.org 3 (Office Applications)
- Firefox (Internet Browser)
- Pidgin and Gyachi (Instant Messenger)
- Cafe Con Leche (Internet Cafe Management Software)
- Autorecovery (Kiosk mode protection, "deepfreeze like tools")
- More...

WHAT'S NEW?

- More webcam support
- Simple installation step process
- More user friendly keyboard shortcut
- Additional applications in **additional** folder, internet cafe recently use application, but not every internet cafe use that.
- Right click have it's own menu
- Some fresh mimetype icon
- More...

INSTALLATION

Before installing Zencafe, just make sure your computer can booting from CDROM, read your BIOS manual how to boot from CDROM. Insert your Zencafe installation CD. Press [ENTER] to use default boot configuration or you can press [F2] if it's not work for you.



```
Zenwalk
linux

Welcome to Zenwalk Internet Cafe Edition 2.0 (Linux kernel 2.6.28.7 )!

Zencafe 2.0 is Internet Cafe OS derived work based on Zenwalk Linux
maintained by A. Hardiena (ahardiena@gmail.com).

The Zenwalk kernel is configured with exclusive LIBATA subsystem, all SATA
and PATA devices are called "sdX" (Optical devices are called "srX").

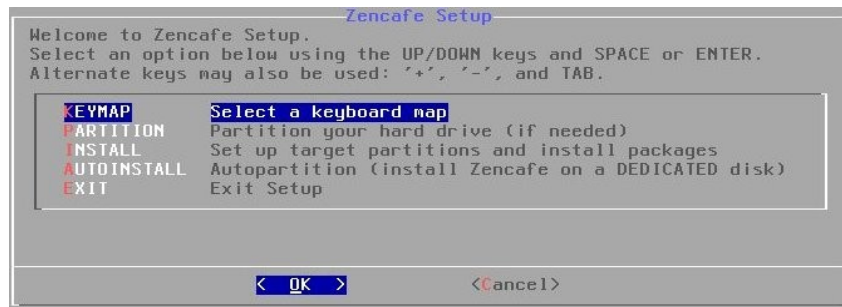
If you need to pass extra parameters to the kernel, enter them at the prompt
below after the name of the kernel to boot (scsi or ata). In most cases
Linux will detect your hardware, and parameters are not needed.

Hit [ENTER] to boot the default "ata" kernel or press [F2]
for a complete list of boot options.

boot: _
```

Zencafe first time installation messages

If you use QWERTY keyboard you can bypass KEYMAP configuration. Enter to change your KEYMAP configuration.



Zencafe Setup Interface

You can choose AUTOINSTALL to simply the process. **BEWARE, AUTOINSTALL will erase your partition and data, just make sure no data's in your harddisk.**



Zencafe AutoInstall, the simply way to install Zencafe

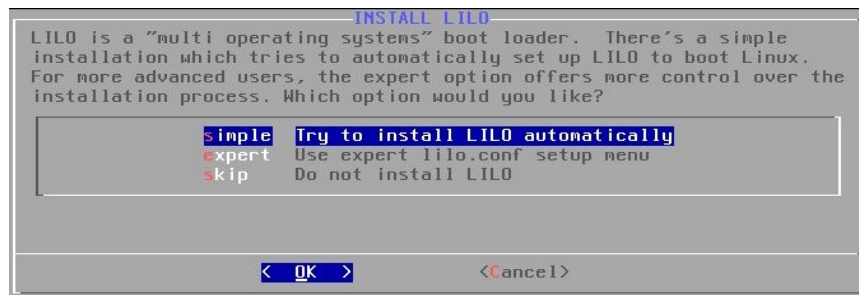
You need to choose which one harddisk you want to use to install Zencafe. Use [SPACE] to tick harddisk you want to use and press [ENTER] to continue. Choose No incase you need change your harddisk or Yes if nothing you need to change.



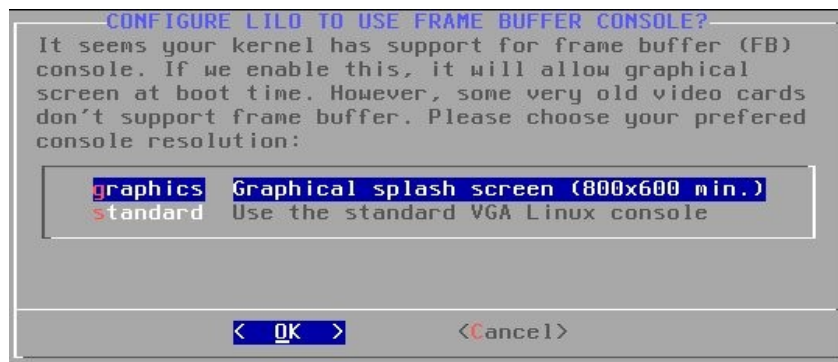
Zencafe Auto Partition

Just wait Zencafe moved it's installed file to your harddisk, buy some donut and caffe to enjoy your self till installation process finished. It's around 5-15 minutes defending your computer speed.

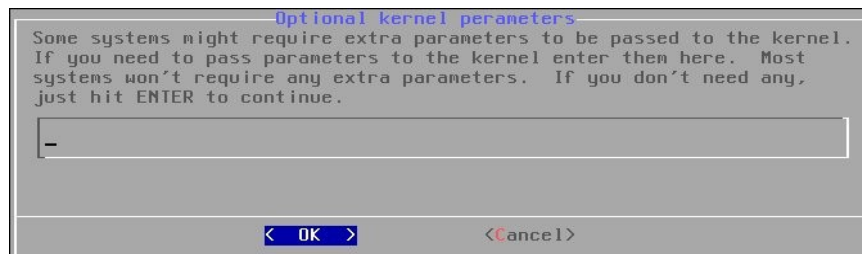
Next, you need install LILO as your bootloader. Just choose Simple to install LILO automatically.



Zencafe LILO Bootloader installation



Configuring your splash screen graphic



Just let it's blank, except you need some optional kernel parameters.

As you use AUTOINSTALL mode, you can install LILO at your Master Boot Record (MBR). Installed at Root (Superblock) only need for advance configuration, like use Zencafe with multiple operating system or if you have other bootloader on your computer. After you press OK, the installation step has finished. Remove your Zencafe Installation CD from CDROM and press CTRL+ALT+DEL to finished.



LILO installation destination

FIRST TIME CONFIGURATION

The installation not actually finished yet, you still need configuring your Zencafe to make sure it's work perfectly. Just little more step. Enter Zencafe from Bootloader, read *End User License Agreement* and choose Yes if you agree with the EULA.

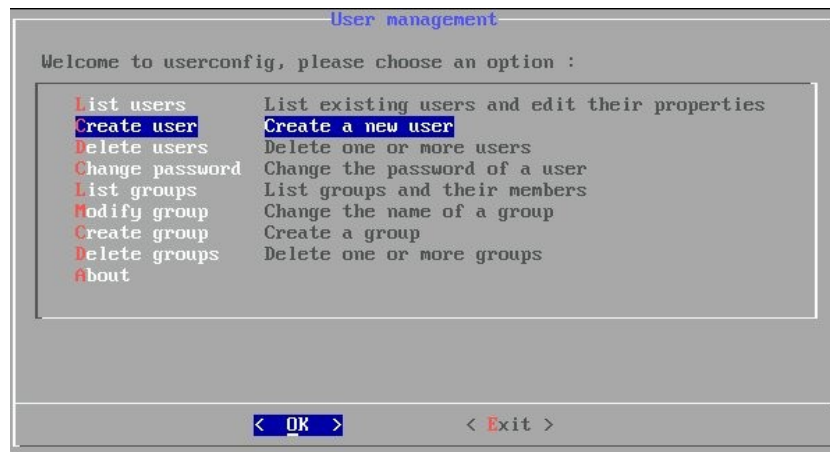
Next, choose your native language, or just press [ENTER] if you use english.



Zencafe System Language

Create root password to securing your Zencafe. Don't use simple word for your password and make sure no body know your root password. And believe me, never lose this root password, don't email me and ask to recover your root password, I will not reply that.

For secure reason, you must create user account and never user root account for your daily usage. You can create more than one user account as much as you want. Choose Exit after you finished created your user account.



Create User account

Wait untill Zencafe finished configuring your installation. Enter username and password that you have created before. Tada... your Zencafe is ready to use.

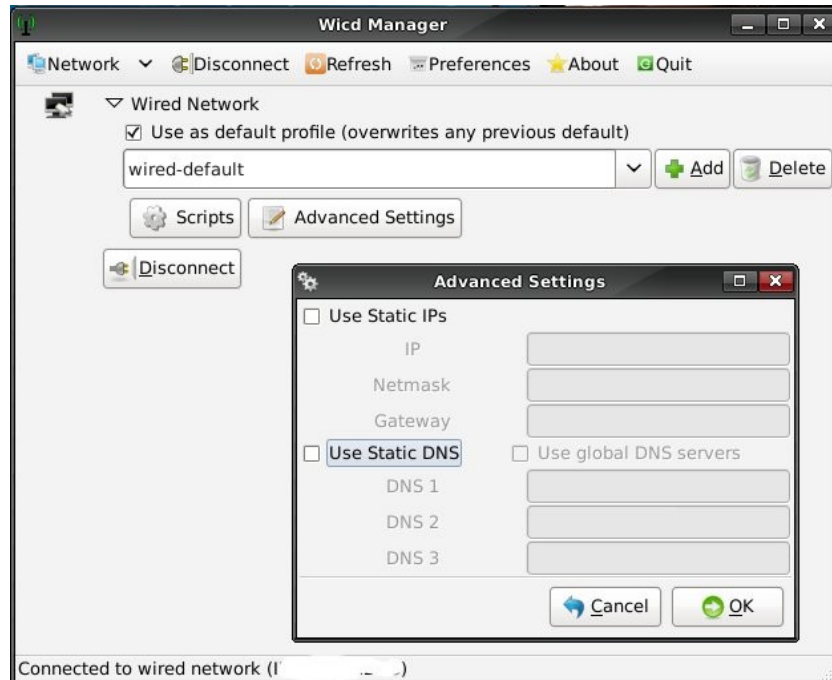
CONFIGURING YOUR ZENCAFE

Connected to available network

It's really easy to configuring Zencafe for your network. Below, network configuration for Zencafe.

- Menu → Control Center → Network Settings
- Click Network icon from systray (right bottom position)

Zencafe use DHCP connection as default network configuration, so you doesn't need configure anything if you use DCHP connection. Click Advanced Setting to configure your client IP if you use statics IP connection.



Zencafe "Wicd Manager" Network Configuration

Share your folder

There's much share option with Zencafe, the simple way is you only need to activated SSH (Menu → Control Center → System Tools → Startup Service → SSH) and that's it. You can use samba if want share your folder with Microsoft Windows or Mac. Here step to do that:

1. Make sure you has activated SAMBA service at first time install, if you don't have activate yet, you can activate SAMBA service at Menu → Control Center → System Tools → Startup Service → SAMBA
2. Open SWAT (Menu > System > Samba Web Administration Tools), login with root user & password.
3. Click GLOBALS icon, follow step below:
 - Workgroup, change with your workgroup name
 - Netbiosname, change with your PC name
 - Security, change with "SHARE"
 - Click "Commit Changes"
4. Click SHARES icon, follow step below:
 - Enter share name, example: Documents, then click "Create Share"

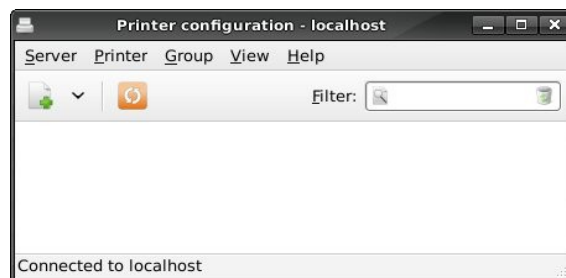
- Path, change with folder path that you want to share, example:
/home/username/Documents
 - Read only, change with "NO"
 - Guest ok, change with "YES"
 - Click "Commit Changes"
5. Change /home/username/Documents permission to RWX (777), if you don't now how to do it, just right click Document folder > Properties > Permission, change all to Read & Write. Please don't ask why I'm not show you how to do that with CHMOD command? No, not everyone know how to maintain from console, right?
 6. That's it, simple enough, right? Now you can share your file with other PC

Access Network shared folder

You can access your network shared folder from Network icon at your desktop. Just press **Connect** and input configuration you needed to access. Choose SSH if you share your folder with SSH, Windows Share if you share your folder with SAMBA, enter IP where your shared folder it is, username, etc.

Add new printer

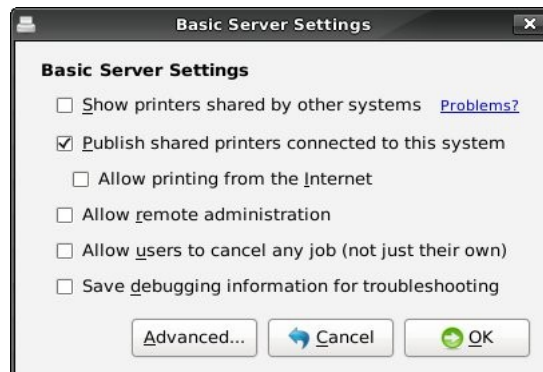
You can add your printer from **Menu** → **Control Center** → **System Tools** → **Printer Manager**, Click button to add new printer and choose your printer from list.



Printer Configuration Manager

Share your printer

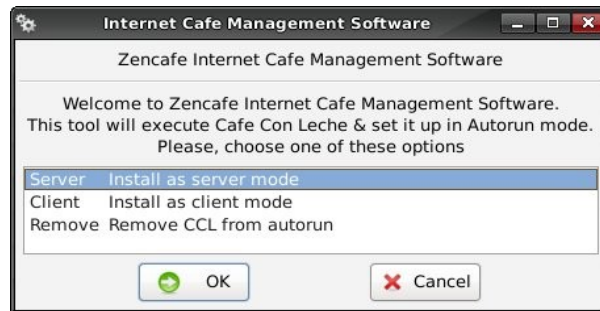
It's very simple to share printer in your Zencafe. Click **Server** menu from **Printer Manager/Printer configuration** then click **Settings** from your printer shared PC. Click **Publish shared printers connected to this system**, and that's it. Restart the PC and all connected PC to make sure it's handshaking, wait for a while and you will see your shared printer at other PC's.



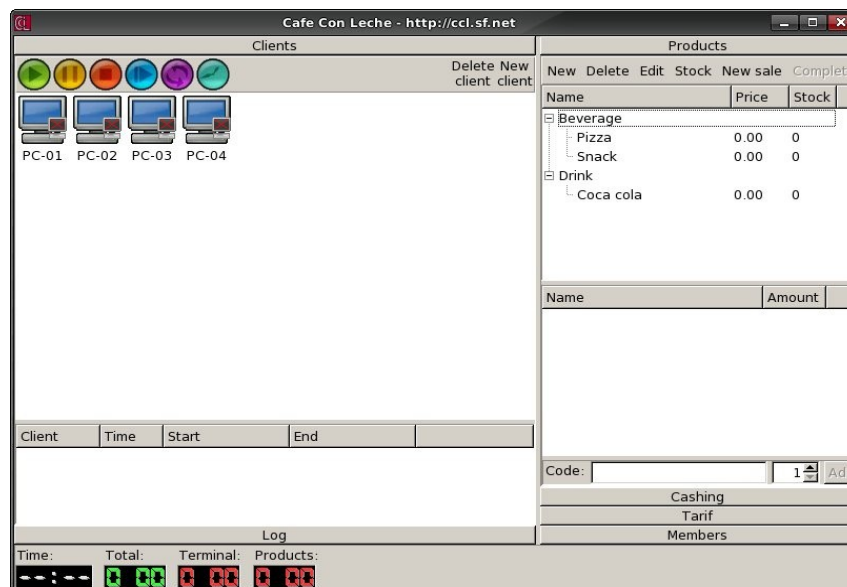
Checklist Publish shared printers connected to this system to share your printer

Managing client time & price usage (Billing)

There's Cafe Con Leche Internet Cafe Management Software included in your Zencafe. If you want to use and activate this software just run **Netcafe Billing Settings** from **Menu** → **Control Center** → **System Tools**. Choose Server mode if you want to use your installed computer as operator computer, and Client mode if you want to use your computer as client computer. Enter your home folder name, if you don't know what is your home folder name, click Documents from your Desktop, it's refer to your home Documents. After finishing this step, just logout or restart your PC, CCL will automatically started.



Internet Cafe Management Software Configuration



Server Mode Internet Cafe Management Software

Automatic login

Zencafe will ask your username login and password everytime you started your internet cafe pc's. You can bypass this process and use automatic login for your internet cafe pc's. Below how activate automatic login.

- Menu → Applications → Settings → Login Window → Security → Enable Automatic Login
Enter username that you want to automatic login. This step will show you last login time everytime you boot up your pc's.
- To disable last login time show, you must edit your system-auth file. Open Terminal, then access with root password. Type **su** then press [enter]. It's will ask your root password. Type **mcedit /etc/pam.d/system-auth** then press [enter]. Add # to **session optional pam_lastlog.so** and press [F10] to save it. Example:

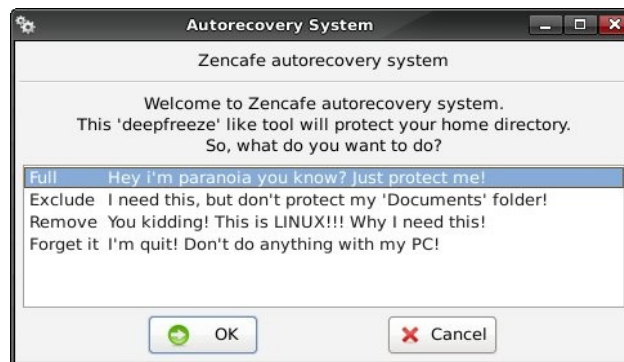
Before: **session**
After: **#session**

optional
optional

pam_lastlog.so
pam_lastlog.so

Autorecovery

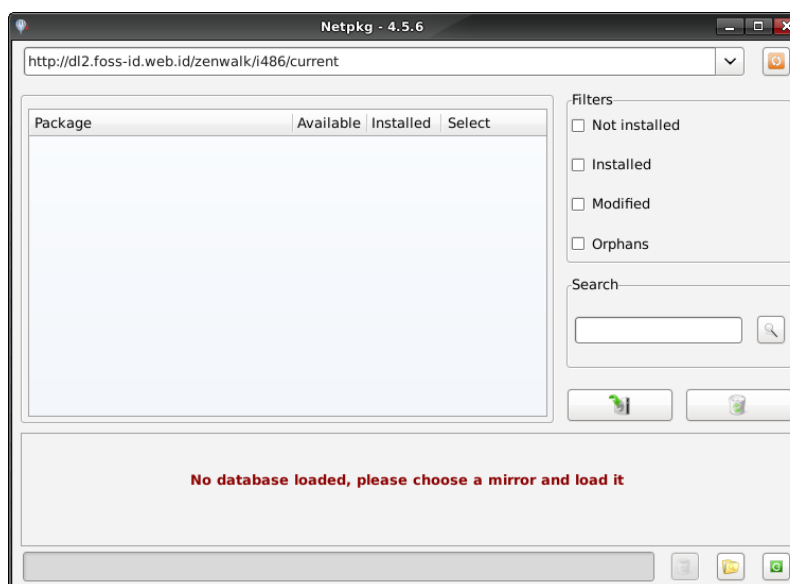
Sometime, internet cafe pc's configuration very easy to change, user moved panel bar form bottom to top, removing Icon from desktop, etc. Zencafe Autorecovery can help to recover your configuration everytime you boot up your pc's. Autorecovery will restore your configuration to last time you activated your Autorecovery configuration. Use Full option if you want to protect your home folder, use Exclude if you still one to protect your home folder but don't want to protect Documents, if you use Exclude, it's will recover all your setting to last time you running this configuration tools, but you still have your document in your Documents folder. To activate autorecovery click **Menu** → **Control Center** → **System Tools** → **Autorecovery**.



Autorecovery System

Install/Upgrade application

There is few additional software included in your Zencafe CD. Just check out **additional** folder, right click **tgz** filename you want to install and choose **Install**. If you cannot find any software you needed there you can install new application or upgrade your installed application from Zencafe Netpkg. Click **Menu** → **Update**. Choose your nearest mirror server from drop down list and click refresh button. Checklist Filter and use search to find application that you want to install or upgrade then click application name from Package list, click Install button.



Choose nearest mirror from your location to speedup install/upgrade process

FREQUENTLY ASKED QUESTIONS

1. We use Zencafe to get money for our Internet Cafe, How much we must pay?

Answer: No, you don't need pay me. It's free to use Zencafe for your Internet Cafe. Send me email and tell me you use Zencafe for your Internet Cafe is enough for me. If you feel some benefit from using this software, please, I'm really appreciate if you donate a little money for your local charity foundation.

2. Can we use Zencafe for Gamecenter? We want to use it for WOW (world of warcraft), ragnarok and something like that?

Answer: Yes, you can use Zencafe for your Gamecenter, there's much Linux game out there that you can use for your Gamecenter. Some case you still want to play Windows game on Linux you can do that with Window Emulator for playing Windows game like WOW, ragnarok etc, but it's not wise choice. Playing game with Windows Emulator like Wine, Cedega, Crossover not as fast as native games. No guarranty it's will work on your Zencafe even with other Linux distribution, and it's not recommended.

3. Can I use Zencafe together with other OS?

Answer: Yes you can do that. You can use SAMBA Share if you want to share your file with Microsoft Windows. Even you can integrated Zencafe to use with Wndows Domain as long you have knowledge to do that, but you cannot use Zencafe default billing software for that, it's designed for Linux only.

4. I want use Zencafe as my operator, proxy server, router etc and I only have one pc for that whole function. Can I do that?

Answer: Sure, you can do that, but I'm not recommended that, to risky. Try to think something like this, how risky the server pc if to much user interaction there. So, if you insist to do something like that, make sure you have knowledge to do that, I cannot help to guide you.

Naturally, Zencafe designed as Internet Cafe desktop client pc. Sometime you still need to add some software if you want to use is as Internet Cafe operator pc. Try to look at **additional** folder first (at Zencafe CD), you can found recently application that you can use for your Internet Cafe like CD Burning tools, Windows Emulator, Photo sheet print software, Scanner tools there, just right click the **tgz** file and Install. If you not found software you need there, you still can use Netpkg, see **Install/Update Application** section for that.

5. I have cam that work with Zencafe older version, but it's not working now, what I must do?

Answer: Zencafe 2.0 support more webcam than before, if your webcam work before but not in this version, you can try to activated manually. **Menu** → **Control Center** → **System Tools** → **Kernel modules**. Search **gspca** or **gspca_main**, choose which one that you think will work with your webcam, double click, look at right column to make sure your **gspca** or **gspca_main** driver active and click **apply**. Try again with Gyachi Messenger. If it still not working chose the other one.

6. I have finished installation and create login user, but Zencafe cannot show the GUI, what's wrong?

Answer: Sometime Zencafe monitor autodetect fails and over estimate for your monitor refresh rate and resolution. Read your monitor manual for maximal refresh rate and resolution use can use for your monitor. If you don't know what is you refresh rate and resolution, you can try this configuration, not guarranty that will work with your pc, just try it. After you get xorg error (after create user login), press CTRL+ALT+F2, enter root as username and enter root password there. Type **mcedit /etc/X11/xorg.conf** , search **HorizSync** and **VertRefresh** change value to **30-60**. Remove Modes that you not use from **Subsection Display**. Example: Usually you only can use **800x600** for your monitor resolution, so remove **“1280x1024”** **“1024x768”**

Before: Modes “1280x1024” “1024x768” “800x600” “640x480”

After: Modes “800x600” “640x480”

Save your work with **F10** and reboot.

7. You developed Zencafe for Internet Cafe usage. Do you use it by your self?

Answer: Yes I do. I have few Internet Cafe branch under **Xentra Warung Internet** (www.xentra.web.id) name. Started from 1999. And I use Zencafe for my Internet Cafe.

8. I have much money and I want investing my money for internet cafe business, but I'm not living in Indonesia, your country. Can you help me to manage my internet cafe?

We planned to customize Linux to fit our business and we want to hire you. We can enclose visa and other permission administration for you. Do you want to join us?

Answer: I have my life here, but why not? I love challenge, it's nice to work around the sea. Check my curriculum vitae (<http://www.ahardiena.web.id/cv/>), and see how capable I'm for your business. Email me, we can discuss how possible is that. :D

9. I have other question about Zencafe, can I send you email?

Answer: Sure you can, but I'm really sorry, I can't help you much about this. I received much email everyday, and I must manage my own internet cafe and my real life to. Try to search from <http://linux.blogs.ie> , zenwalk forum & wiki, zencafe community website (Indonesian), AWALI forum (Indonesian Open Source Internet Cafe Association, www.awali.org), ForumLinux (Indonesian) or google for your problem first, I do the best I can, but I can't promise you to reply the email.